

CERTIFICATE OF LOCATION OF GOVERNMENT CORNER

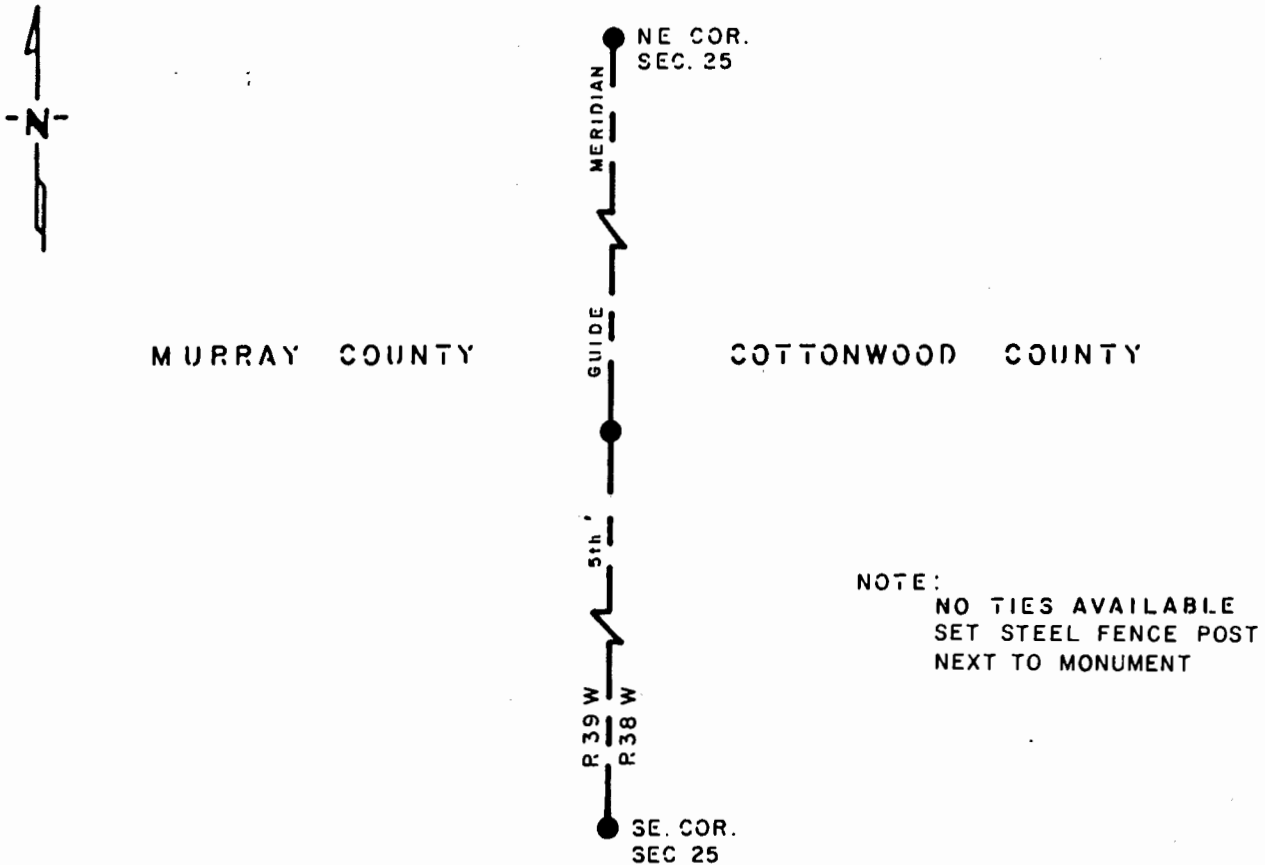
EAST QUARTER Corner of Section 25, Township 107 N., Range 39 W., 5th. P.M.

STATE OF MINNESOTA, County of MURRAY

At the corner location shown on the sketch:

- On _____ found a _____
DATE
- left monument as found, lowered monument, removed monument (explain)
- On 9-16-85 placed a 1 1/4" x 1 1/4" x 20" PERFORATED STEEL TUBE WITH
DATE
ALUMINUM CAP STAMPED "D.N.R. SURVEY MARKER", UP 0.1'

SKETCH OF REFERENCE TIES



Statement of evidence relative to this corner location is on back of page.

J. B. M. 10-30-85
G-1181

I hereby certify that this document and the data contained herein was prepared by me or under my direct supervision.

Lowell R. Pomeroy 11-7-85
SIGNATURE DATE

Registration No. 17005

- Land Surveyor, Professional Engineer
- County Surveyor, County Engineer

OFFICE OF THE COUNTY RECORDER

County of _____

I hereby certify that this document was filed in the Co. Recorders office at _____ .M. on the _____ day of _____ A.D., 19__

County Recorder _____

By _____, Deputy

DOCUMENT NO. _____

East Quarter Corner Section 25, Township 107 North, Range 39 West

This corner was originally established by the U. S. General Land Office survey in 1857. The government notes show corner marked with a wood post set in mound of earth with pits and trench dug around the mound. Also deposited charcoal and planted plum seeds northeast and southwest.

In March 1985, the DNR Bureau of Engineering contacted the following for corner information:

Murray County Offices of the Recorder and Highway Engineer
Cottonwood County Offices of the Recorder and Highway Engineer
Mn/Dot Office in St. Paul
U.S. Dept. of the Interior, Fish and Wildlife Office in Minneapolis
Land Surveying Firms:
Martin Land Surveying of Worthington
Madsen Land Surveyors of Fairmont
Sioux Engineering of Windom

The following information was obtained from the Cottonwood County Recorders Office:

A railroad right-of-way plat, date not indicated, shows this corner 1464 feet north of railroad center line station 1807 +23, and 2636 feet from the northeast corner of Section 36. Plat does not show what was found or set at the corner.

The following information was obtained from Sioux Engineering:

A copy of a resurvey plat of Township 107 North, Range 38 West, obtained from Howard Boeck of Westbrook, and done by C. W. Gove, County Surveyor, in 1898, shows an oak stake at the corner:
2637 ft. from the northeast corner Section 36

The following information was obtained from the Murray County Recorders Office:

Surveyor's Record Book, on page 289, contains a survey by J. W. Woolstencraft, County Surveyor, dated April 11, 1924. Survey states corner is lost.

In March 1985, the DNR Bureau of Engineering traversed to the area of the corner and found the corner area to be in a cultivated field. Computed a lost position for this corner using the northeast corner of Section 36 and the east quarter corner Section 24. Lost position was found to measure:

2634.81 ft. from the northeast corner of Section 36
5269.62 ft. from the east quarter corner of Section 24.

In July 1985, searched at the lost position, but found no evidence of a monument or occupation.

Accept the lost position as the location for the corner.

Traverse information is available from the DNR Bureau of Engineering.

sln33/cors